

MALE

URSEC®

FEMALE

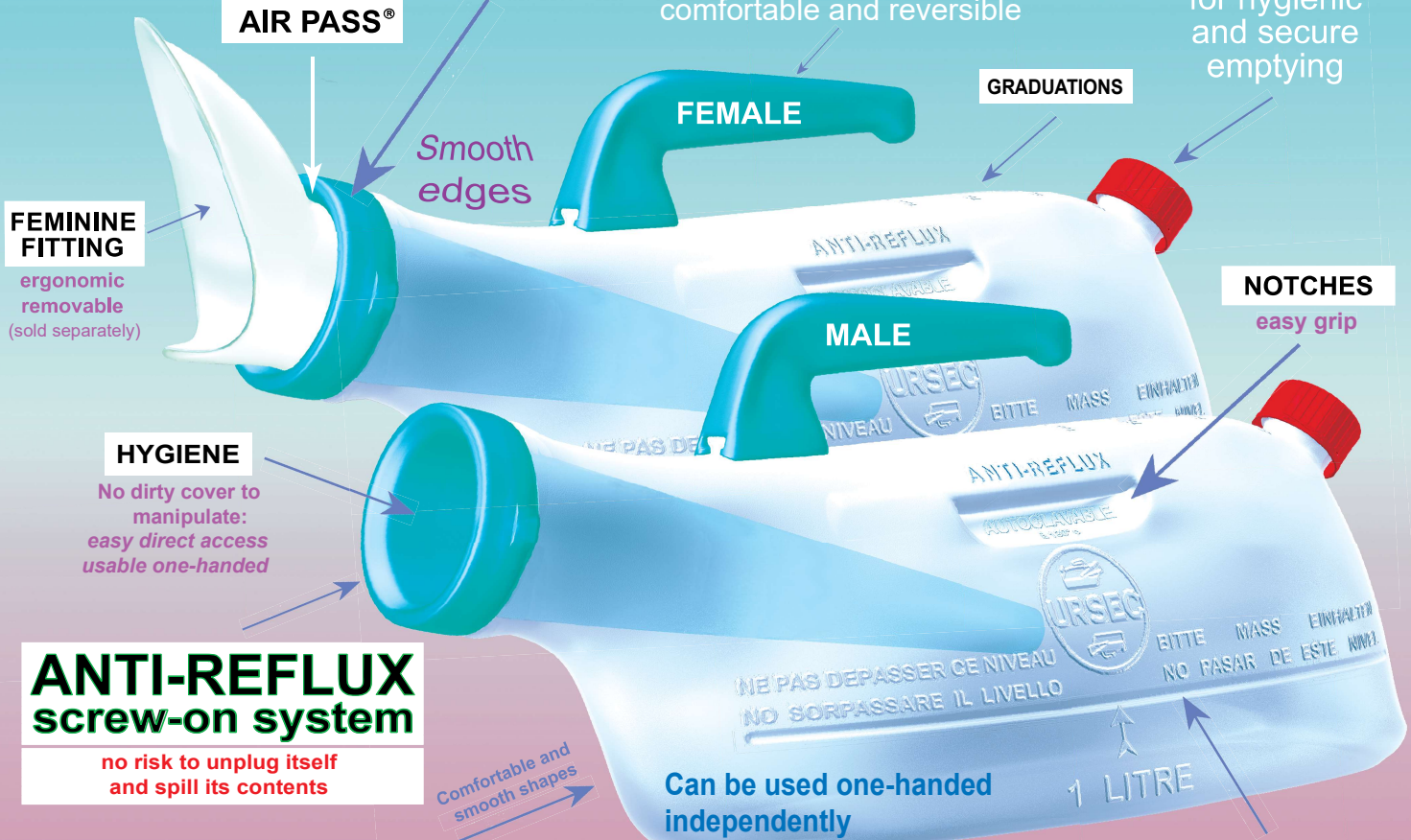
SPILLPROOF SAFETY URINAL

THE ONLY ONE WITHOUT LID OR COVER THAT EVEN UPSIDE DOWN RETAINS ITS CONTENTS UP TO 1 LITER
FOR THE BEDRIDDEN, THE DISABLED, HOSPITALS, NURSING HOMES, AMBULANCES ...

ANTI-REFLUX
PERMANENT SECURITY

REMOVABLE HANDLE
GLOW IN THE DARK
comfortable and reversible

MTQUICK®
EASY AND CLEAN
for hygienic and secure emptying



ANTI-REFLUX
screw-on system
no risk to unplug itself and spill its contents

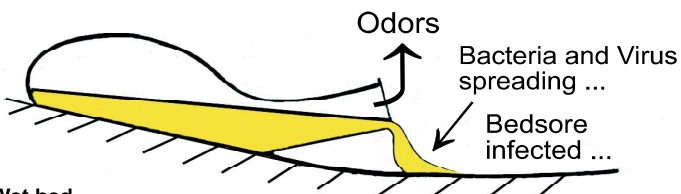
STERILIZABLE AT 130°C/266°F
or with chlorine

Polypropylene: does not yellow

VISIBLE LEVEL
INDICATES LEVEL AND TIDYNESS
Anti-reflux capacity: 1 Liter

FOR AN ACTIVE PREVENTION AGAINST NOSOCOMIAL INFECTIONS

Never again :



Wet bed
→ Incomfort, laundry, cleaning and disinfections costs !
The Open Door to INFECTIONS ...

... WITH URSEC !

ANTI-REFLUX + DEFLECTOR

Even upside down and without cap:



Dry bed
→ Comfort and Economy
Bacteria and Virus stay captive: absolute hygiene !

3 SPILLS PREVENTED WILL MORE THAN PAY FOR THE COST OF URSEC !
EVERYDAY WELLNESS

MADE IN FRANCE



REGISTERED TRADEMARKS
PATENTS IN 21 COUNTRIES

Manufactured exclusively by **GOUGET** (Paris, France). Internet: www.gouget.com
Documentation for information only. Specifications may vary.

URSEC®



PREMIUM URINALS

© GOUGET

MALE

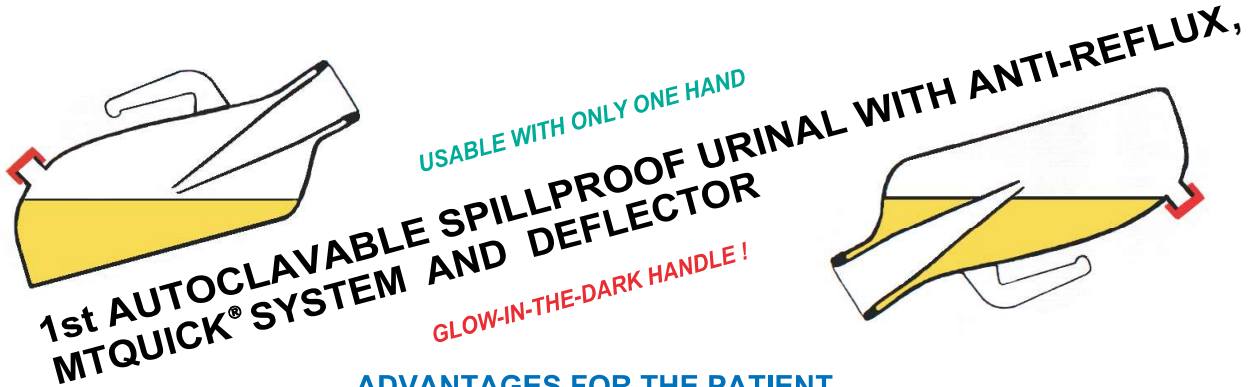
URSEC®

FEMALE

ANTI-REFLUX SPILLPROOF URINAL WITH MTQUICK AND DEFLECTOR
THE ONLY ONE WITHOUT LID OR COVER THAT EVEN UPSIDE DOWN RETAINS ITS CONTENTS UP TO 1 LITER

WHY CHOOSE THE URSEC URINAL ?

- ➔ **ABSOLUTE SECURITY** : screw-on Anti-reflux, no accidental unplugging. Easy to clean (Chlorine).
- ➔ **PRACTICAL** : no lid or cover often dirty and cumbersome to take off ! Immediately usable.
- ➔ **URSEC TRANSPARENT BODY** : instant visual control (cleanliness, level, aspect of contents).
- ➔ **100% EFFICIENT** : keep its contents till 1 liter without spills even upside down, even during tilting.
- ➔ **NO LID OR COVER** : no smelly uncovering. No need to call. Can be used one-handed independently.
- ➔ **MADE OF SMOOTH, HYPOALLERGENIC, AUTOCLAVABLE AND REUSABLE POLYPROPYLENE.**



ADVANTAGES FOR THE PATIENT

- If URSEC rolls over in bed, there is no problem: sheets remain dry. **It will not leak.**
- It is strong, light and easy to handle, even in the dark. URSEC empties at the back (better hygiene) with the MTQuick® system.
- To plug the MTQuick system, use either the regular white screw-on cap or the red childproof cap (both caps supplied)
- URSEC has a capacity of approximately 1 liter (32 oz). With URSEC always ready, the patient can sleep peacefully.
- The ergonomic **glow-in-the-dark** removable handle makes using and emptying URSEC easy.

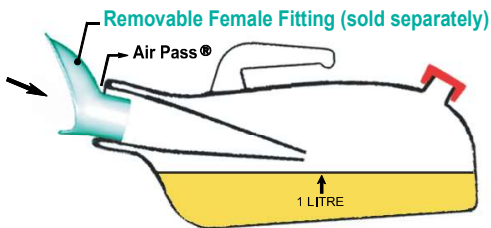
ADVANTAGES FOR THE INSTITUTION

- **SPILLPROOF**: even if URSEC is rolled over in bed, its contents cannot spill thanks to its simple but effective design.
- URSEC therefore prevents the discomfort of wet beds and avoids the need to frequently change and wash the patient's sheets.
- It helps **fight nosocomial infections and reduces the need for frequent disinfecting.** URSEC is **re-usable.**
- At night, URSEC can be left in the bed, instantly available to the patient, who needs not call for assistance. Usable even with 1 hand.
- 96% enclosed, URSEC is nearly **odor free and does not need any cover.** Its use is not noisy.
- URSEC is european designed. It has a graduated measure so no odorful transfer is needed to assess the volume of the miction !
- URSEC can be washed (with water + Chlorine or disinfectant), **sterilized by autoclave (130°C/266°F) or ethylene oxide.**
- The MTQuick system allows a quick, practically odorless, and hygienic emptying (no splashing).

BY IMPROVING THE HYGIENE OF INSTITUTIONS, URSEC WILL HELP THEM GET THE ACCREDITATION

USE

URSEC is not supplied sterile: **sterilize before use.**
 URSEC should be placed in the bed or held with a slight slope.
 It must be used only with the anti-reflux on.
 It should not be filled above the 1 liter mark (32 oz).
 The plastic of URSEC does not yellow, urine does not adhere to it.
 The end of yellowish ordinary urinals !
 Once rinsed out, URSEC becomes clear again.



URSEC + FITTING = FEMALE URSEC

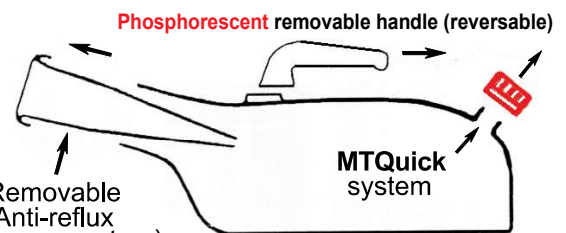
Fresh Air



Precise emptying via MTQuick®

CLEANING - DISINFECTING

Female URSEC: unplug the Feminine fitting
 Then for both models:
 Unscrew the **ANTI-REFLUX** and the **MTQuick.**
 Rinse with water and Chlorine or a good disinfectant (bedpan washer compatible)
 Sterilizable by autoclave (130°C or 266°F except childproof cap) or Ethylene Oxide
 Twist on the **ANTI-REFLUX** and the **MTQuick**



MALE URSEC

3 SPILLS PREVENTED WILL MORE THAN PAY FOR THE COST OF URSEC !



SURE TO BE SAFE

